

ILE International™

*Language Training and Assessment
Experts Worldwide*



***Fit for purpose language training programs and
assessment tools for the business professional.***

Your best choice to successful business communication.

www.ile-international.com





Founded in 1986, **ILE International** has earned a reputation for excellence in the field of language training and foreign language assessment.

With over 28 years of experience in the corporate sector, we offer a wide range of general and fit-for-purpose foreign language courses in English, French, Portuguese, German and Spanish.

Our teaching and administrative staff comprise highly skilled, multidisciplinary language experts with a solid academic background and ample experience in this profession.

ILE International offers fit-for-purpose foreign language programs and its team of professionals is able to plan, create, structure and implement courses that are tailor-made to the individual requirements of its clients using state-of-the-art technology in order to obtain the desired results more rapidly.

The agreements and partnerships we have forged with other institutions abroad enable us to offer language training courses in a number of European countries as well as North America.

ILE International is an authorized test taking center in France (France Education Internationale), to hold TCF test sessions, it is also a preparation center to prepare for TOEIC (Test of English for International Communication) and Linguaskill (general or business), SIELE, Goethe Pro and Ev@lang.



In-Company Classes

Our executive language courses comprise modules that are taught at a student's place of work. This includes group or private sessions, in-company and/or distance learning courses via the ile-online.com platform. We also offer a Blended Learning service.

All study programs are structured based on the results obtained from a preliminary placement test which each new student needs to take to determine the initial proficiency level and specific language needs. This information is complemented by interviews with the prospective student in order to pinpoint specific communication goals.

Training Modules

Normal

Between 2 and 3 sessions per week, each lasting 1.5 hours. This is considered an ideal study schedule to build a solid base in the language within a reasonable length of time.

Intensive

Between 4 and 5 sessions per week lasting from 1.5 to 2 hours each. This schedule is recommended for students who need to acquire essential communication skills in a relatively short time.

Express

Daily sessions lasting 1.5 hours each for a period of 15 days. This schedule is ideal when preparing for a specific project (conference, presentation, exam).

Specific Purposes

These are distance learning modules designed to meet very specific communication requirements. This teaching method focuses on skills that relate directly to the student's profession, for example, finance, foreign trade, marketing and law.



Blended Learning

These are modules that cover a range of different training methods so that a student can combine the advantages that each one offers. These may include face-to-face classes, distance learning sessions, telephone conferences and access to e-books complemented by distance tutoring for autonomous or guided learning. Each course is customized to cater to the individual needs of the student.

An important aspect of the service we provide is detailed follow-up and continual monitoring to ensure that our students make steady progress and accomplish their communication goals.

Benefits

- Fit-for-purpose courses that are specially designed to address the individual needs of our students targeting terminology of a specific industry or sector
- Proficient and dedicated teaching staff
- Consistent follow-up and constant monitoring

Distance Learning

Thanks to the variety of multimedia tools available for teaching, distance learning is highly stimulating and informative. The class schedule is flexible and easy to set up. Distance learning sessions follow exactly the same academic norms as in-company sessions resulting in significant, speedy progress to acquire new skills in a second language.

Benefits

- Flexible hours
- Variety of multimedia tools
- Schedule of training sessions planned according to a student's availability
- Classes held in the comfort of the home and/or office
- Substantial progress in the areas of oral expression and listening comprehension
- Fit-for-purpose courses that focus on a student's specific area of interest
- Teachers who are native speakers and highly experienced linguistic educators
- Availability of ESP (English Specific Purposes) courses
- **Constant follow-up and guarantee that objectives will be met**



Specialty Distance Learning Courses

The ESP (English Specific Purpose) courses are created with great care taking into account the specific area of expertise of a participant. Once the linguistic level has been identified, we proceed to the structuring of a course that satisfies the communication needs of a student based on a chosen discipline.

ESP areas can cover:

- Legal English, Français juridique, Español de los negocios
- Marketing, Banking, Hospitality, Engineering
- Finance, in English and/or French
- International trade



Evaluation and Certification

ILE International is a test center that holds test sessions and/or offers preparation modules for TCF, TOEIC and Linguaskill, SIELE, Goethe Pro, Ev@lang.

These test sessions can take place either at our own center, according to a pre-established schedule, or else at another location, such as a college or the office of a corporate client.

We can also arrange for tests to be held at our offices for those who have special requirements.

Language assessment tools serve as a benchmark to identify a person's level of proficiency in a language, their ability to handle specific communication tasks either at work or at school, as well as define a time span to achieve foreign language communicative competence during the training process.



ILE International can offer three main tools:

TCF – Test de Connaissance du Français

Tool developed in France by the National Ministry of Education CIEP (Centre International d'Études Pédagogiques) used to evaluate a person's knowledge of the French language. This test is required by universities and Departments of Immigration in France and the Canadian province of Quebec.



TOEIC – Test of English as a Foreign Language

Tool recognized internationally to assess a person's comprehension level of the English language in a work-related setting. This test is produced by ETS.

LINGUASKILL – General or business

This test is available in two versions : general and/or business. It is produced by the University of Cambridge.

All participants receive a certificate with their score and the companies they work for are given a group report listing all the candidates that sat the test.

Exam and Test Preparation

Our language center offers courses that prepare students fully for various internationally recognized tests and exams, such as, **TCF, TOEIC, TOEFL, IELTS** and those of **Cambridge University** including **Linguaskill, SIELE, Goethe Pro**. These courses focus on developing and/or reinforcing skills in the areas of written and listening comprehension, written composition and oral expression.

Instruction can be provided face-to-face or via distance learning modules; on a one-on-one basis or a group setting. On average, each training module takes 20 hours to complete and covers all aspects of test. It is also possible to put greater emphasis on a particular skill if and when it is necessary.

All of our modules incorporate intensive revision of all materials and conclude with practice tests.

Benefits

- Preliminary analysis of a student's initial level and identification of areas of improvement
- Structuring of a customized training program
- Sessions focused on reinforcing specific points of information
- Intensive practice sessions in a simulated examination setting



In addition, we can prepare and submit a student's application for any of the above exams.



Cross-Cultural Awareness Coaching

Having basic cross-cultural awareness goes hand in hand with language skills. This comprehensive approach results in a successful outcome to a student's goals in the international business arena. Our seminars teach how to communicate effectively with people of different nationalities and cultural backgrounds.

Benefits

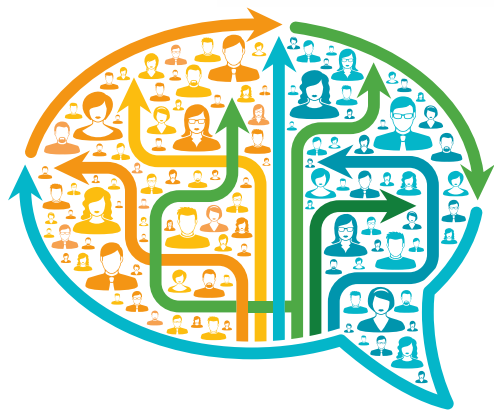
- Multinational business communications styles and customs, including cultural approaches relevant to specific countries and situations
- Advice regarding business practices in foreign markets

Linguistic Audit

This is an excellent exercise that measures competence and helps identify the linguistic assets of employees through the application of diverse assessment tools. Internal corporate benchmarks and policies can then be established to define areas for improvement which will be incorporated into the language training process to benefit each individual student.

Applications and benefits

- It assesses and presents graphically the linguistic profiles of employees in a language efficiency organizational chart
- It is a useful tool for decision making in regards with promotions
- It sets benchmarks to identify suitable candidates for specific tasks and assignments that involve foreign language use in international projects and mobility
- It is an excellent means of reference to plan and implement language training programs



Courses Abroad

Thanks to the agreements that **ILE International** has with a network of partner institutions abroad, we are able to offer total immersion language programs in the USA, England, France and Canada.

The modules range from 1 to 4 weeks with a choice of either individual or group classes.

Translation Services

ILE International offers translation services for documents, contracts and work manuals. For further details, please contact:

info@ile-international.com

ILE International is an organization that specializes in the teaching of foreign languages and the application of language assessment tools. It is also an authorized test center.

We offer fit-for-purpose language courses using the following modes:

- In-company group and/or individual classes
- Distance learning
- Blended learning modules
- Courses in specialized vocabulary for law, finance and commerce
- Cross-cultural awareness coaching
- Total immersion courses abroad

We are an authorized test taking center for TCF, and a test preparation center for the following tests and exams:

- TCF
- TOEIC
- TOEFL
- IELTS
- Cambridge
- Linguaskill
- SIELE
- Goethe Pro
- Ev@lang



For further details:
info@ile-international.com

Visit our website:
http://ile-international.com/

Follow us on Facebook
https://www.facebook.com/pages/ILE-International/

E-mail
info@ile-international.com